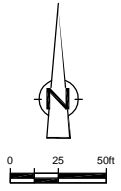
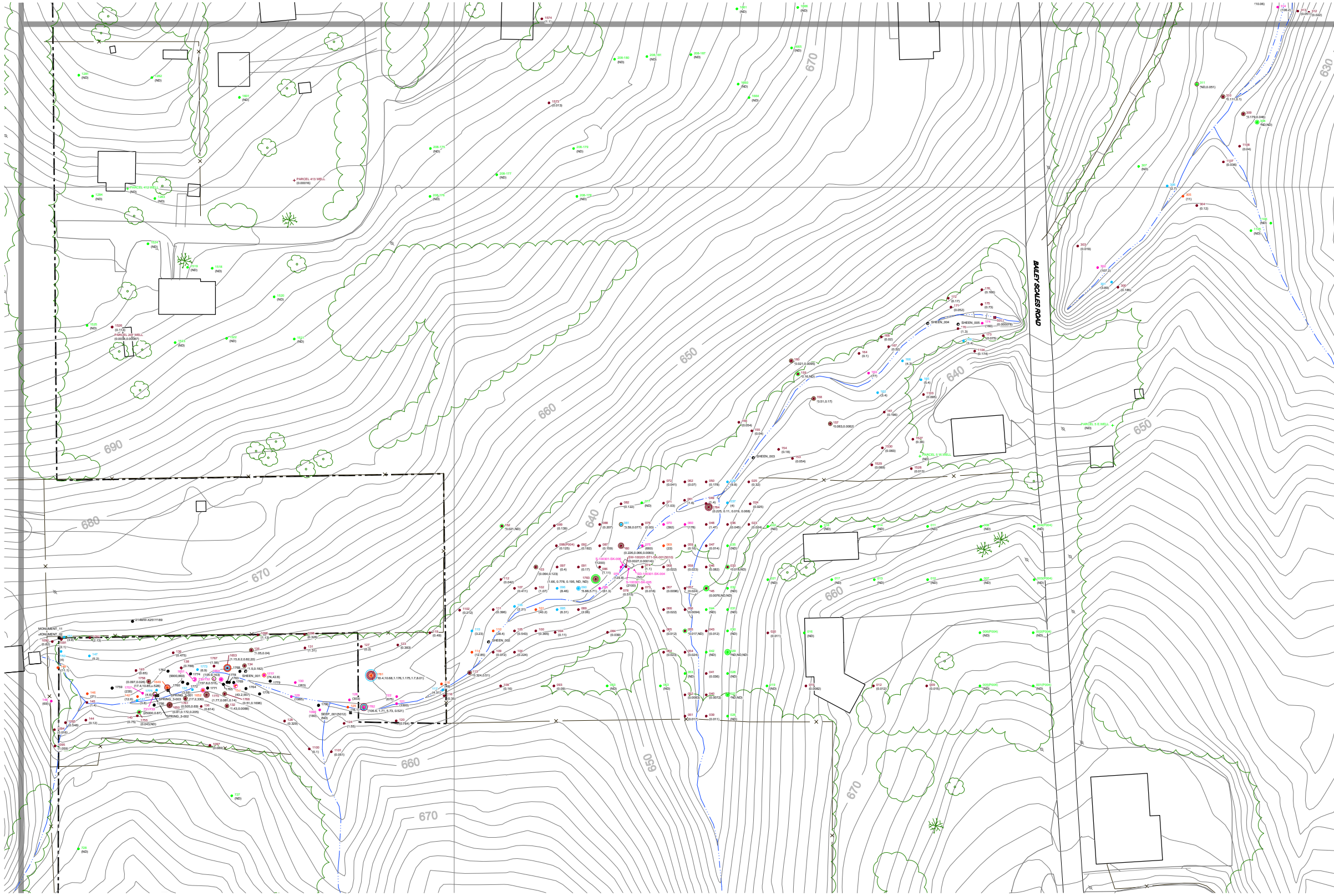


2B



CONTINUED ON DRAWING No. 3A



CONTINUED ON DRAWING No. 2B

No	Revision	Date	Initial

LEGEND

- EXISTING GROUND SURFACE ELEVATION CONTOURS (feet AMSL)
- EXISTING VEGETATION
- EXISTING BUILDINGS
- FENCE LINE
- RAILROAD TRACKS
- DIRT ROADS
- ROADS / UNPAVED AREAS
- ROADS / PAVED AREAS
- APPROXIMATE GM PROPERTY BOUNDARY
- APPROXIMATE STUDY AREA BOUNDARY
- APPROXIMATE SURFACE WATER LOCATION
- RED INDICATES SOIL SAMPLE RESULT EQUAL TO OR GREATER THAN 50 PPM (2002)
- ORANGE INDICATES SOIL SAMPLE RESULT EQUAL TO OR GREATER THAN 10 PPM AND LESS THAN 50 PPM (2002)
- BLUE INDICATES SOIL SAMPLE RESULT EQUAL TO OR GREATER THAN 2.2 PPM AND LESS THAN 10 PPM (2002)
- BROWN INDICATES DETECTED SOIL SAMPLE RESULT LESS THAN 2.2 PPM (2002)
- GREEN INDICATES NO PCBs DETECTED AT SOIL SAMPLE LOCATION (2002)
- SAMPLE LOCATION WITH NO DATA
- S-100301-SK-006 SOIL SAMPLE LOCATION AND IDENTIFIER (OCTOBER 2001)
- S-100301-SK-006 TOTAL ARCOLORS (PPM)
- S-100301-SK-006 TOTAL ARCOLORS AT SURFACE (PPM)
- S-100301-SK-006 TOTAL ARCOLORS AT SECOND DEPTH (PPM)
- S-100301-SK-006 TOTAL ARCOLORS AT THIRD DEPTH (PPM)
- S-100301-SK-006 COLOR CORRESPONDS TO CONCENTRATION AT SURFACE
- S-100301-SK-006 COLOR CORRESPONDS TO CONCENTRATION AT SECOND DEPTH
- S-100301-SK-006 COLOR CORRESPONDS TO CONCENTRATION AT THIRD DEPTH
- DENOTES SURFACE SAMPLE (0 - 0.33 feet BGS)
- DENOTES SURFACE SAMPLE (0 - 0.33 feet BGS) AND ONE SAMPLE AT DEPTH (0.33 - 2 feet BGS MAXIMUM)
- DENOTES SURFACE SAMPLE (0 - 0.33 feet BGS) AND TWO SAMPLES AT DEPTH (0.33 - 2 feet BGS MAXIMUM)
- SEDIMENT SAMPLE IDENTIFICATION
- SURFACE WATER SAMPLE IDENTIFICATION
- S-100301-SK-004 TOTAL ARCOLORS IN SURFACE WATER SAMPLE (PPM)
- S-100301-SK-004 TOTAL ARCOLORS IN SEDIMENT SAMPLE (PPM)
- S-100301-SK-004 COLOR CORRESPONDS TO CONCENTRATION IN SEDIMENT SAMPLE
- S-100301-SK-004 COLOR CORRESPONDS TO CONCENTRATION IN SURFACE WATER SAMPLE
- S-100301-SK-004 SEDIMENT SAMPLE LOCATION AND RESULT
- SW-100001-ST1-SK-001 SURFACE WATER SAMPLE LOCATION AND RESULT (0.0005)
- 3902 VEGETATION SAMPLE LOCATION AND RESULT (ND)
- (5000) HIGH FLOW SAMPLE LOCATION AND RESULT
- SHEEP_001 LOCATION OF OBSERVED SHEEP
- SPRING_001 LOCATION OF OBSERVED SPRING
- SHEEN_001 LOCATION OF OBSERVED SHEEN
- 1305 ROCK CHIP SAMPLE LOCATION AND RESULT (0.19)
- 1310 WIPE SAMPLE LOCATION AND RESULT (ND)
- WELL_001 WELL LOCATION
- PROPERTY CORNER MONUMENT
- ND INDICATES NON-DETECT SAMPLE RESULT
- NS NOT SAMPLED

SCALE VERIFICATION

THIS BAR MEASURES 1" ON ORIGINAL. ADJUST SCALE ACCORDINGLY.

Approved

DRAWING STATUS

Status	Date	Initial

Status

Date

Initial

**GM POWERTRAIN
BEDFORD PLANT**

STREAM INVESTIGATION SUMMARY

STREAM SAMPLE LOCATIONS
STUDY AREA 2 - 2 OF 2



Source Reference:
BASE MAP COMPLETED BY AIR-LAND SURVEYS, FLINT, MI. APRIL 2001

Project Manager: J.M.	Reviewed By: S.V.	Date: AUGUST 2002
--------------------------	----------------------	----------------------

Scale: AS SHOWN	Project N°: 13968-00	Report N°: PRES005	Drawing N°: 2B
--------------------	-------------------------	-----------------------	-------------------

NOTE:
VALIDATED DATA FOR SAMPLING ACTIVITY UP TO JUNE 11, 2002.
DRAWING SUBJECT TO REVISION.