



# GM CETC (formerly Powertrain) Bedford Facility, Bedford, Indiana

*Project Fact Sheet 33*

This is the thirty-third Project Fact Sheet that has been prepared to provide the community with information regarding activities being performed at the Site. This Fact Sheet discusses cleanup activities being managed by General Motors LLC (GM), which is the new company that was formed after the former General Motors Corporation sold a portion of its assets as a result of the United States bankruptcy code. Properties not transferred to the new GM during the sale, are under the management and ownership of the former General Motors Corporation, now called the Revitalizing Auto Communities Environmental Response (RACER) Trust.

## Project Field Fact

Rock removal in some areas of the creek has occurred up to a depth of 20 feet into the bedrock, and floodplain soil excavations have varied between 1 foot and 12 feet below ground surface.

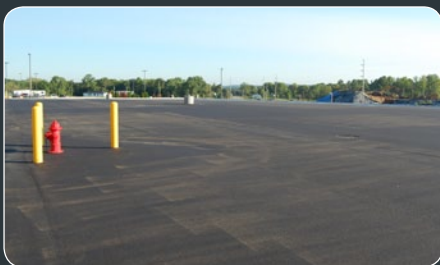
## Project Background

A RCRA Corrective Action (CA) is being conducted at the GM CETC Bedford Facility, in accordance with the terms of the Performance-Based Corrective Action Agreement executed by United States Environmental Protection Agency (U.S. EPA) on March 20, 2001, and modified on October 1, 2002, March 29, 2007, and May 9, 2008. Some of the off-Site activities that are conducted as part of the overall RCRA CA are being addressed under the Comprehensive Environmental Response, Compensation, and Liability Act (CERCLA) Removal Action (RA) Program pursuant to an Administrative Order on Consent (AOC), effective July 31, 2003.

## Facility Update

Within the East Plant Area, construction of the low permeability cover system has continued north of the storm water pond and is nearing completion. It is anticipated that the remaining sections of the cover system will be completed prior to the close of the 2011 construction season. Surface water and groundwater that have the potential to come in contact with contaminated soil continue to be collected and treated on-Site. Newly completed areas are receiving erosion protection and seeding. Work continued on finalizing the alignment of the perimeter groundwater collection trench, which will be installed around the downgradient (north and east) side of the East Plant Area. This trench will collect groundwater leaving the Plant property for treatment prior to discharge.

Completion of capping (including an asphalt cover) on the west side of GM Drive occurred in August 2011.



COMPLETED WEST PLANT ASPHALT COVER SYSTEM



ADDITIONAL EXCAVATION IN FRONT LAWN OF WEST PLANT AREA



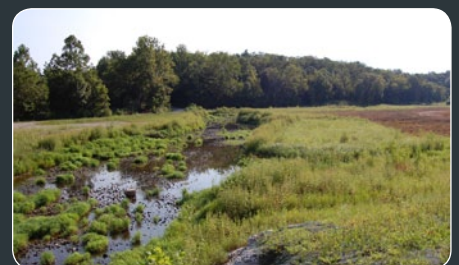
EAST PLANT AREA FINAL COVER SYSTEM GRADING ACTIVITIES



EAST PLANT AREA COVER SYSTEM PROGRESS NORTH OF STORM WATER POND



COMPLETED EXCAVATION WEST OF PEERLESS ROAD



RESTORATION EAST OF PEERLESS ROAD

## Off-Site Activities Update

The remaining soil excavation and transport work in the Bailey's Branch and Pleasant Run Creek area was completed in August 2011. As a result, all of these areas with previously identified PCBs soil and sediment contamination have now been cleaned up to meet the approved project cleanup criteria.

Final grading and planting activities at the Bailey's Branch confluence with Pleasant Run Creek and east of the Peerless Road Bridge were completed in July 2011. RACER Trust is responsible for the completion of the restoration of the RACER Trust property downstream (west of) of the Peerless Road Bridge. GM will restore two privately owned properties west of Peerless Road along this section of creek, in conjunction with RACER Trust's restoration activities.

Development of the final design plans for the Spring 18 area has continued over the 3rd quarter of 2011. Clean groundwater will be diverted from the affected Spring 18 area by means of a French-drain bedrock trench, which will direct the clean water away from the affected area and into the creek system downstream, thereby reducing the volume of water produced (and requiring treatment) at Spring 18. The remaining PCB impacted water still emanating from the Spring will continue to be treated. Construction of the Spring 18 diversion bedrock trench is expected to be completed before the end of 2011.

## Roads Update

Truck traffic increased over the summer as removal and restoration work was conducted. More recently, traffic has decreased with the completion of the transportation of soil from the excavation west of Peerless Road.

GM will monitor the road surface along the haul routes during major construction activities to determine if additional repairs will be needed. The driving safety of truckers will also continue to be monitored as long as hauling operations are being conducted.

## Communications Update

A combined neighborhood and public meeting was held on June 23, 2011, at the CRA field trailers south of the GM CETC Bedford

Facility. The presentation materials for this meeting are posted on the GM website at [www.BedfordPowertrainCorrectiveAction.com](http://www.BedfordPowertrainCorrectiveAction.com). The next combined neighborhood and public meeting is scheduled for September 29, 2011 at 6:00 PM and will be held at the same location.

The Community Liaison Panel (CLP) met at the field trailers (Meeting No. 42) on June 23, 2011, as part of an additional communication avenue for the community. CLP meeting minutes from the previous meeting have been posted to the project website. The next CLP meeting will be held on September 30, 2011.

An information repository is maintained on the GM website at [www.BedfordPowertrainCorrectiveAction.com](http://www.BedfordPowertrainCorrectiveAction.com). A list of new project documents, submitted to the repository since Fact Sheet 32 is provided on this Fact Sheet, below.

To date, this Fact Sheet has been provided to area residents through the U.S. Postal Service and by direct handout at the field trailers and community meetings. If you would like to continue receiving this Fact Sheet through the mail, please contact Katie Kamm at (812) 277-8954.

## Upcoming Activities Summary

The following is a list of anticipated work to be initiated or completed at the Site and property located off-Site over the next few months:

- *Continuation of containment, collection, and treatment of springs and groundwater collection systems that contain low levels of PCBs.*
- *Installation of coreholes along the Spring 18 diversion bedrock trench alignment to assist in finalizing the design.*
- *Installation of a diversion bedrock trench for the Spring 18 area later this year.*
- *Conduct the Fall 2011 El CA750 groundwater static levels and groundwater sampling.*
- *Maintenance of temporary liner covers and runoff water collection and treatment, where necessary, until the East Plant Area cover system is complete.*
- *Completion of the final cover system on the East Plant Area.*
- *Completion of a groundwater extraction study for the oil recovery system in the East Plant Area.*



RESTORATION NORTH  
OF BROOMSAGE ROAD

## Documents

The following documents have been submitted to the U.S. EPA and IDEM since Fact Sheet 32. Once finalized after agency review, the documents will be available for review on the website.

- Quarterly Progress Report 41
- CERCLA Progress Report  
*April/June 2011*  
*July/August 2011*
- Public Presentation  
*June 23, 2011*

## Public Access Website at...

[www.BedfordPowertrainCorrectiveAction.com](http://www.BedfordPowertrainCorrectiveAction.com)  
*Get up-to-date project information  
and view project related documents.*

## Contact Information

If you would like more information about this project, please contact any of the following:

**U.S. EPA**  
*Peter Ramanauskas*  
for general information and on-site work  
Tel: (312) 886-7890

*Brad Stimple*  
for creek cleanup work  
Tel: (440) 250-1717

**IDEM**  
*Gerald O'Callaghan*  
Tel: (317) 233-1522

**ATSDR (Public Health Agency)**  
*Mark Johnson*  
Tel: (312) 886-0840

**PROJECT INFORMATION AND  
TRUCK TRAFFIC COORDINATOR**  
*Katie Kamm*  
Tel: (812) 277-8954