



This is the thirty-fourth Project Fact Sheet that has been prepared to provide the community with information regarding activities being performed at the Site. This Fact Sheet discusses cleanup activities being managed by General Motors LLC (GM).

Project Field Fact

At least 28 species of aquatic invertebrates (e.g., damselfly, dragonfly, mayfly, etc.) have been identified in the restored creek since October 2007, which is up from 19 species found in the creek prior to the cleanup.

Project Background

A RCRA Corrective Action (CA) is being conducted at the GM CETC Bedford Facility, in accordance with the terms of the Performance-Based Corrective Action Agreement executed by United States Environmental Protection Agency (U.S. EPA) on March 20, 2001, and modified on October 1, 2002, March 29, 2007, and May 9, 2008. Some of the off-Site activities that are conducted along Bailey's Branch and Pleasant Run Creek as part of the overall RCRA CA are being addressed under the Comprehensive Environmental Response, Compensation, and Liability Act (CERCLA) Removal Action (RA) Program pursuant to an Administrative Order on Consent (AOC), effective July 31, 2003.

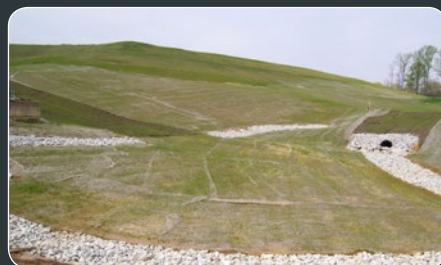
Facility Update

Within the East Plant Area at the GM Plant, construction of the low permeability cover system was completed in the remaining area north of the storm water pond during the first quarter of 2012. Some seeding and vegetation maintenance work is ongoing. Vault construction, including all related cover soil work and connection of the sump automation systems to the Site Source Control Water Treatment Plant (SSC WTP) was completed in 2012.

Work continued on finalizing the alignment of the perimeter groundwater collection trench, which will be installed along the downgradient (north and east) side of the East Plant Area. The newly proposed re-alignment of the trench has been reviewed by U.S. EPA and is being evaluated through drilling. (This trench will collect groundwater from the East Plant Area before it leaves the Plant property, for treatment prior to discharge.) Drilling along the proposed alignment commenced in June. Geological data will be collected from each location for use in the design of the trench and to determine if additional boreholes are required.



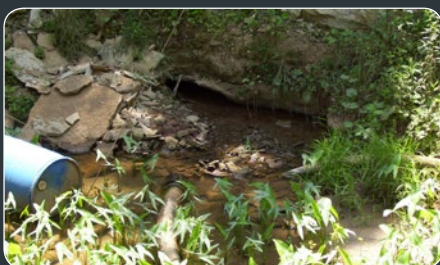
CREEK RESTORATION SOUTH OF BROOMSAGE ROAD



COVER SYSTEM NORTH OF THE STORM WATER POND FROM BAILEY SCALES ROAD



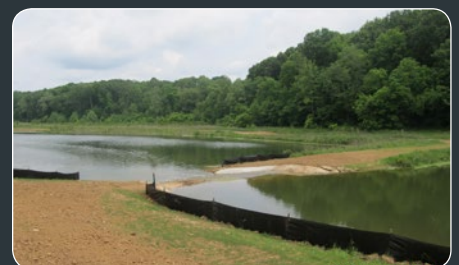
REPAIRING THE POND OVERFLOW STRUCTURE NORTH OF BROOMSAGE ROAD



SPRING 018 SOUTH OF BROOMSAGE ROAD



DRILLING ACTIVITIES ALONG PROPOSED TRENCH ALIGNMENT



REPAIRED POND OVERFLOW NORTH OF BROOMSAGE ROAD

Off-Site Activities Update

The remaining soil excavation and transport work in the Bailey's Branch and Pleasant Run Creek area was completed in August 2011. As a result, all of these areas with previously identified PCBs soil and sediment contamination have now been cleaned up to meet the approved project cleanup criteria.

Restoration work upstream (east) of the Peerless Road Bridge has been completed, with the exception of a short segment of the creek near Spring 18. The remaining areas of restoration work are located downstream (west) of the bridge. RACER Trust (which owns the former General Motors Corporation properties not purchased by the new GM) is responsible for the restoration of the RACER Trust properties, the largest area of remaining restoration being located on the large parcel immediately west of the Peerless Road Bridge. GM will restore two privately owned properties several thousand feet west of Peerless Road along this section of creek. Restoration plans are currently being developed.

Development of the final design plans for the Spring 18 area has continued into the 2nd quarter of 2012. PCB concentrations in the spring water have decreased dramatically since the Removal Action work was completed several years ago. A bedrock drilling program was completed in December 2011 to further assess conditions in the area. GM, U.S. EPA and IDEM met on May 31 to discuss future remediation plans for Spring 018.

A plan for soil removal on two additional off-site properties was recently submitted to U.S. EPA and IDEM. GM is currently preparing responses to U.S. EPA comments. Scheduling of this work will be performed once the work plans are approved by U.S. EPA and IDEM.

Roads Update

Remediation and restoration related truck traffic has diminished substantially over the past few months as construction activities related to the cover system and creek cleanup are essentially complete. GM will monitor the road surface along the haul routes when restoration construction activities resume west of Peerless Road to determine if additional repairs will be needed. The driving safety of truckers will continue to be monitored as long as hauling operations are being conducted.

Communications Update

Because of very low activity at the Site through the winter and spring, no project update sessions were held during the first half of this year. The Plant did hold an open house on September 29, 2011 as a thank you to

the community for their continued support. A combined neighborhood and public meeting was also held on September 29, 2011, at the CRA field trailers south of the GM CETC Bedford Facility. The presentation materials for this meeting are posted on the GM website at www.BedfordPowertrainCorrectiveAction.com.

The Community Liaison Panel (CLP) last met (Meeting No. 43) on September 30, 2011, as part of an additional communication avenue for the community. CLP meeting minutes from the previous meetings have been posted to the project website.

The next combined neighborhood and public meeting is scheduled for July 25, 2012 at 6:00PM and will be held at the CRA field trailers south of the GM CETC Bedford Facility. The next CLP meeting also will be held on July 25, 2012.

The Documents Repository at the Plant has been disassembled. Copies of the documents have been copied in PDF format to compact discs (CDs) and are available for viewing at the Bedford Public Library. The online information repository also continues to be updated and maintained on the GM website, which can be accessed at www.BedfordPowertrainCorrectiveAction.com. A list of new project documents, submitted to the online information repository since Fact Sheet 33 is provided on this Fact Sheet, below.

To date, this Fact Sheet has been provided to area residents through the U.S. Postal Service and by direct handout at the field trailers and community meetings. If you would like to continue receiving this Fact Sheet through the mail, please contact Katie Kamm at (812) 277-8954 or respond with the previously received post cards.

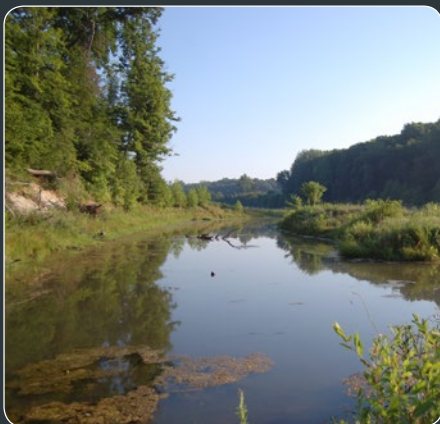
Upcoming Activities Summary

The following is a list of anticipated work to be initiated or completed at the Site and property located off-Site over the next few months:

- Continuation of containment, collection, and treatment of on-Site springs and groundwater collection systems that contain low levels of PCBs.
- Continuation of Spring 18 monitoring and remedy evaluation and development of restoration plans for this area.
- Continuation of drilling along the proposed alignment of the perimeter groundwater collection trench.
- Continuation of restoration of the two remaining properties GM is responsible for west of Peerless Road.
- Submittal of the East Plant Area Vault Construction Certification.
- Completion of a removal response test for the oil recovery system in the East Plant Area.
- Removal of soil from the two properties west of the Plant, once U.S. EPA approval of the proposed work is received.

Public Access Website at...

www.BedfordPowertrainCorrectiveAction.com
Get up-to-date project information and view project related documents.



RESTORATION NORTH OF BROOMSAGE ROAD

Documents

The following documents have been submitted to the U.S. EPA and IDEM since Fact Sheet 33. Once finalized after agency review, the documents will be available for review on the website.

- Quarterly Progress Report 42
- Quarterly Progress Report 43
- Quarterly Progress Report 44
- Vault Post Closure Plan
- Vault Annual Compliance Report 2011
- CERCLA Progress Report
September/October 2011
November/December 2011
January/February 2012
March/April 2012
May/June 2012
- Public Presentation
September 29, 2011

Contact Information

If you would like more information about this project, please contact any of the following:

U.S. EPA
Peter Ramanauskas
for general information and on-site work
Tel: (312) 886-7890

Brad Stimple
for creek cleanup work
Tel: (440) 250-1717

IDEM
Gerald O'Callaghan
Tel: (317) 233-1522

ATSDR (Public Health Agency)
Mark Johnson
Tel: (312) 886-0840

PROJECT INFORMATION AND TRUCK TRAFFIC COORDINATOR
Katie Kamm
Tel: (812) 277-8954